

TIE-XR X-ray Tablet Inspection Machine



Industry's first inspection machine for all solid formulations.
Capable of inspecting materials such as stainless steel, glass and plastic
which cannot be examined with a conventional inspection machine.

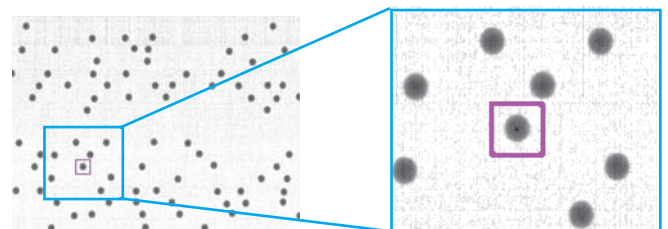
TIE-XR X-ray Tablet Inspection Machine



- Industry's first X-ray tablet inspection machine.
- Detects objects as small as 0.3mm diameter.
- Detects even stainless steel or glass, not detectable by a metal detector.
- High performance (up to 800,000 tablets per hour).
- Can be connected to TIE-9000 series surface inspection machine.
- Inspection images can be stored.



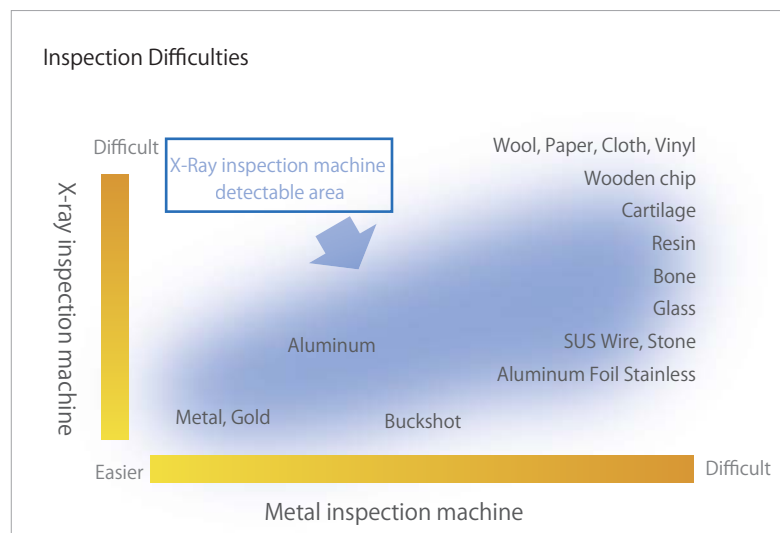
Inspection Image



Main Feature

Inspection Row	Up to 16 lines on the conveyer (depending on the tablet's shape)
Inspection Capacity	Up to 800,000 tablets/hour (depending on the tablet's shape)
Discharging method	One shot damper mechanism (optional 4-split damper available)
Sensitivity	Minimum 0.3mm diameter (metal ball), depending on tablet density.
X-ray output	30 - 80 kV 0.4 - 3.3 mA output, 12 - 100 W
Safety	1.0 micro Sv/h or less (auto leakage prevention mechanism)
Belt width	270 mm
Belt speed	10, 15, 20 m/minute (selectable)
Power source	200 V AC 3.5 kVA or less
External dimension	TIE-XR 1,645 (W) x 1,750 (H) x 1,060 (H) mm TIE-9000/9500XR 3,407 (W) x 1,750 (H) x 1,060 (H) mm
Weight	Approximately 1,500 kg (TIE-XR)
Ambient Temperature	0 - 35 degree C, Relative humidity 30-85% (non-condensing)

Inspection Difficulties



Design and specifications are subject to change without notice.

Ikegami Tsushinki Co.,Ltd.

- Head Office : 5-6-16 Ikegami, Ohta-ku, Tokyo 146-8567, Japan TEL.03-5700-1111 / FAX.03-5700-1137
- Overseas Sales Division : 5-6-16 Ikegami, Ohta-ku, Tokyo 146-8567, Japan TEL.03-5700-4117 / FAX.03-5748-2200
- Beijing Office : Room No.307 Tower B, Jia Tai International Mansion No.41 East Fourth Ring Road, Chaoyang District, Beijing China TEL.010-85710350 / FAX.010-85711804

■ URL : <http://www.ikegami.co.jp/en/>

Ikegami Electronics (U.S.A.), INC.

- Headquarters : 37 BROOK AVENUE, MAYWOOD, NJ 07607 TEL.(201) 368-9171 / FAX.(201) 569-1626

■ URL : <http://www.ikegami.com>

Ikegami Electronics (Europe) GmbH

- Headquarters : Ikegami Strasse 1, D-41460 Neuss, Germany TEL.02131-1230 / FAX.02131-102820
- U.K. Branch : 1 Windmill Business Village, Brooklands Close, Sunbury on Thames, TW167DY, England TEL.01932-769700 / FAX.01932-769710

■ URL : <http://www.ikegami.de/>

Ikegami Electronics Asia Pacific Pte.Ltd.

- Headquarters : 1 Tampines Central 5, #3-3 CPF Tampines Building, Singapore 529508 TEL.6260-8820 / FAX.6260-8896

■ URL : <http://sg.ikegami.co.jp>

SHI18A153-OM

